



- Cut fabric 15 1/2" x 8 1/2"
 - Fuse thin woven interfacing to wrong side.
 - Mark at intervals of 2 1/2, 1 3/4 as shown (I cut the fabric 17" but you only need 15 1/2")



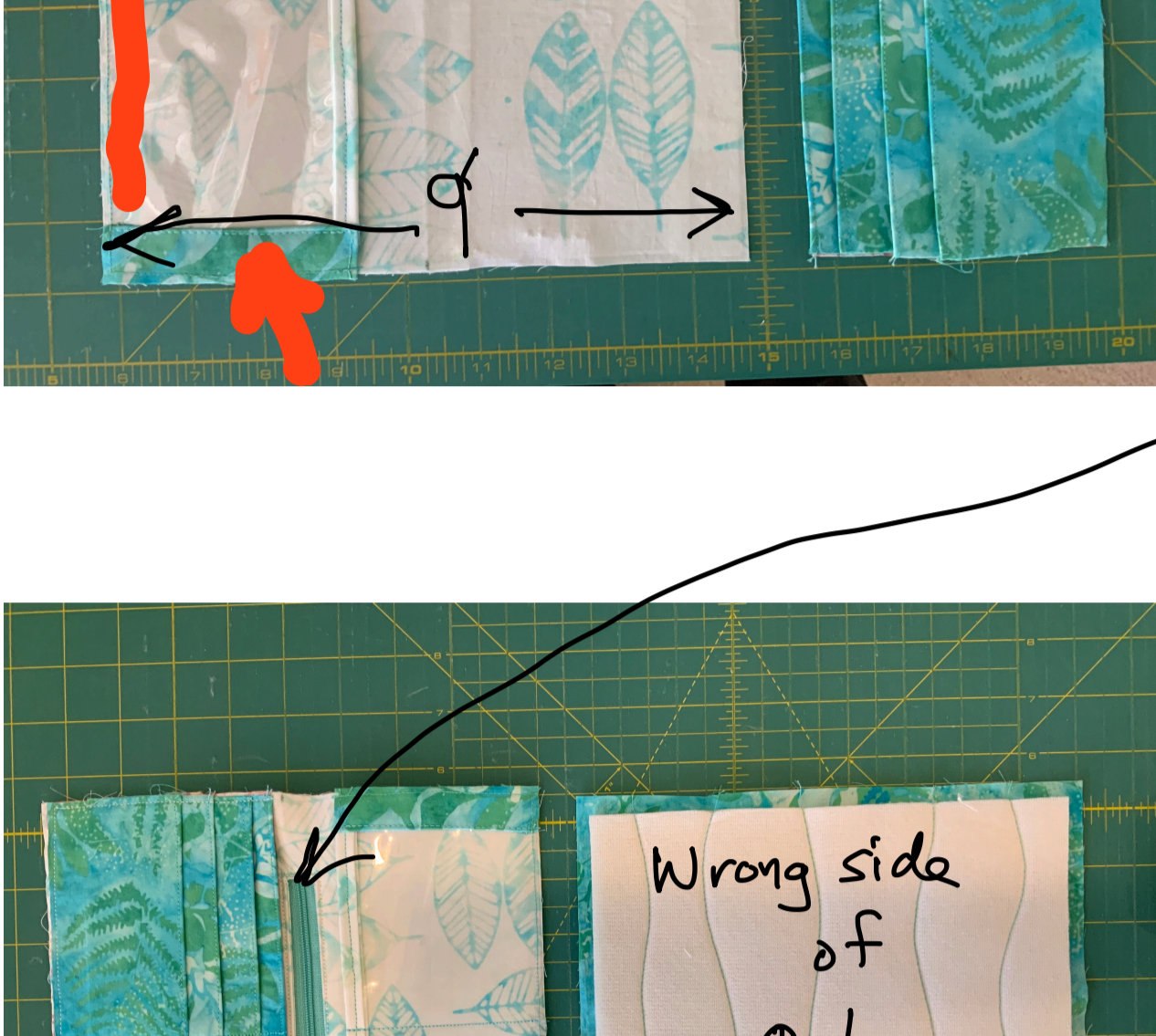
Fold it like an accordion.



- Unfold and Top stitch the card pockets 1/8" from edge.
 - Refold + stitch down the center with 2mm stitch length
 - Fuse light woven interfacing to lining
 - Quilt an 8" x 8 1/2" piece of "Soft + Stable" to Outer



- Make a binding strip using (1" x 9") + sew them to a piece of Vinyl about 3" x 8 1/2" but first look at how I added fabric at the sides in next photo



Add fabric here next time instead of extending vinyl all the way to edge.

Sew both card pocket sections to lining after Making a Zipper!



Place zipper 1/2" from end.

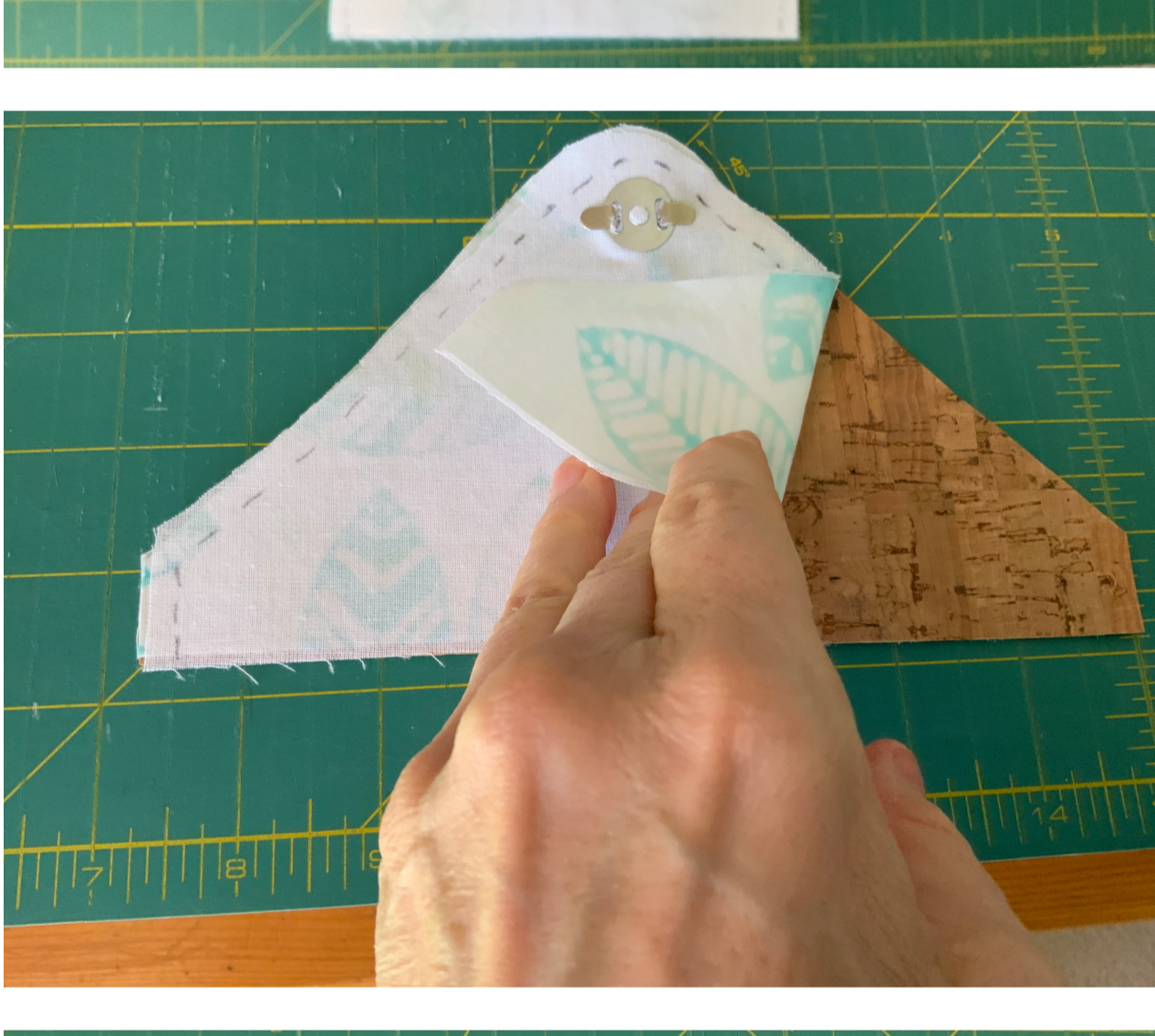
Back of Zipper pocket



This flap was a little too wide



Attach magnetic snap (or velcro)



Place male on flap lining before sewing lining to cork outer.



Trim seam.



* I couldn't get my stitch tension correct. - Snap (or velcro) needs to be close to edge of fabric but not too close.



With RST, Leave one of the 8 1/2" sides open + sew the other 3 sides with 1/2 inch seam allowance.



Slide the flap inside the open end + sew. (Test the snap distance)

